



Annex J: Permanent Marker for Completed Projects

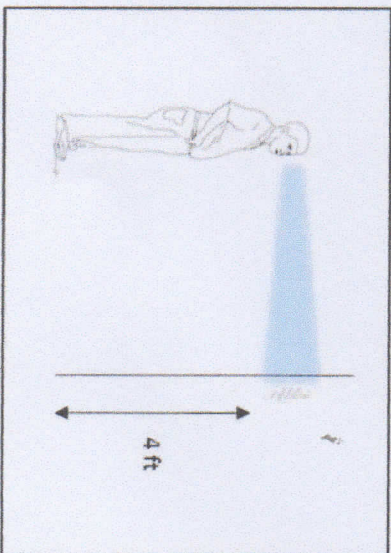
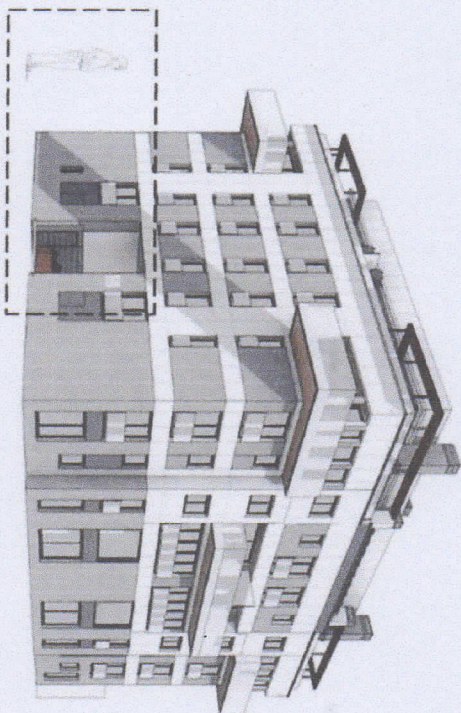
FOR VERTICAL PROJECTS

SIZE: 8.5 inches width x 11 inches height

MATERIAL: Must be weather-resistant, may be non-corrosive metal (brass, aluminum, etc.) or plastic (acrylic, fiberglass, corrugated, etc.).

CONDITION/S: Must be installed on the wall near the entrance or main door, preferably within eye level (4-5 ft)

	
This _____ project title _____	
was constructed thru the	
DILG-Performance Challenge	
Fund (PCF) program	
availed by the	
Province/City/Municipality of	
_____ name of LGU _____	
for having passed the DILG-Seal	
of Good Local Governance	
in 2018.	
Project Completed on:	
_____ date _____	



FOR HORIZONTAL PROJECTS (CONCRETE STAND OR POST SIGNAGE)

OPTION 1

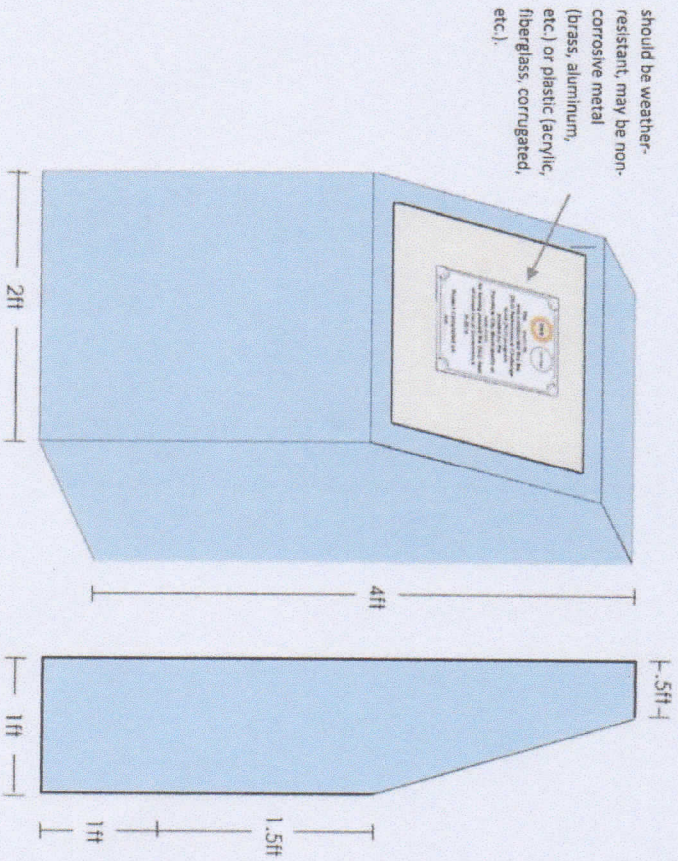


Figure 1. Concrete Stand
(Same with the Marker used for vertical projects)

OPTION 2

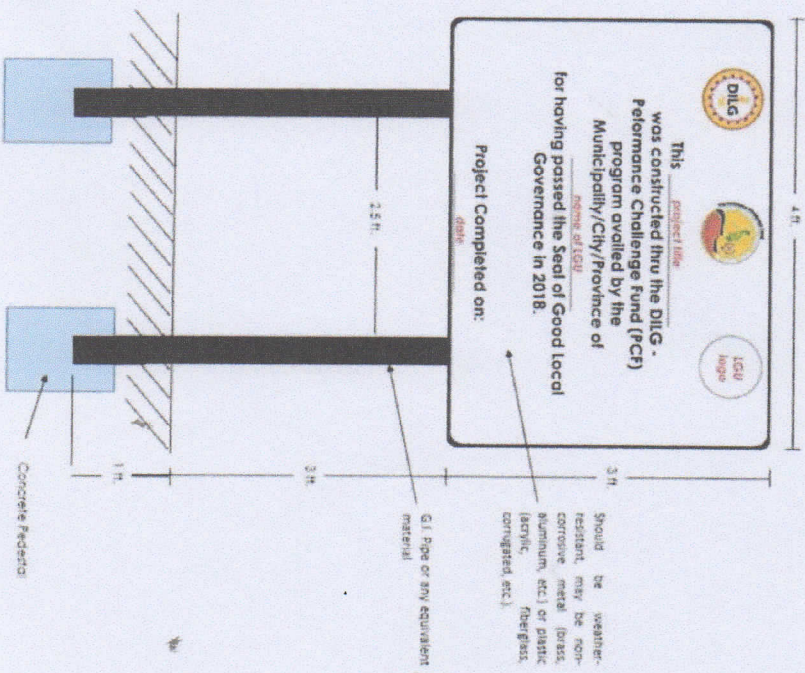


Figure 2. Post Signage